

# CL5000J SERIES | Label Printing Scale

## SPECIFICATIONS

Model	CL5000J-C		
Max.capacity (kg)	6	6/15	15/30
Readability (g)	2	2/5	5/10
Tare range (kg)	-5.998	-5.998	-9.995
External resolution	1/3,000 (Dual interval)		
Display digit	4 / 5 / 6 / 6 (Preset tare / weight / unit price / total price)		
Display type	4 LCD displays + Dot matrix LCD (60 x 8 dots)		
Printing speed	75mm/sec		
Printer resolution	202dpi		
Label size (mm)	Width : 40 ~ 64 Length : 30 ~ 120		
Power	AC 100 ~ 240V, 50/60Hz		
Operating temperature	-10°C ~ +40°C		
Platter size (mm)	382(W) x 246(D)		
Dimensions (mm)	CB type : 480(W) x 432(D) x 173(H) CP type : 408(W) x 493(D) x 607(H) CR type : 408(W) x 493(D) x 542(H) CH type : 420(W) x 281(D) x 706(H) CS type : 408(W) x 493(D) x 703(H)		
Product weight (kg)	CB type : 10.5    CR type : 12.0 CP type : 11.2    CH type : 12.2 CS type : 15.1		

## FEATURES

- Memory capacity  
-6,000 PLUs & 1,000 direct ingredients(300 byte/pcs)
- Speed key  
- Standard : 96 speed keys [48 keys x 2 (shift key)]  
- Pole : 144 speed keys [72 keys x 2 (shift key)]  
- Hanging : 144 speed keys [72 keys x 2 (double-click)]  
- Self service : Up to 172 speed keys
- High-speed thermal printer
- Fast PLU down load: 50PLUs/sec
- Wire /Wireless network
- Cartridge -loading-type label installation
- 30 fixed format & 10 free label format design

## OPTION

- Wireless bridge card
- Dust protection cover
- Platter with back rail
- Large platter/Fish tray
- Metal-dome switch
- PC manager program (CL - Works)

# CAS

CAS BLDG., # 440-1, SUNGNAE-DONG,  
GANGDONG-GU, SEOUL, KOREA

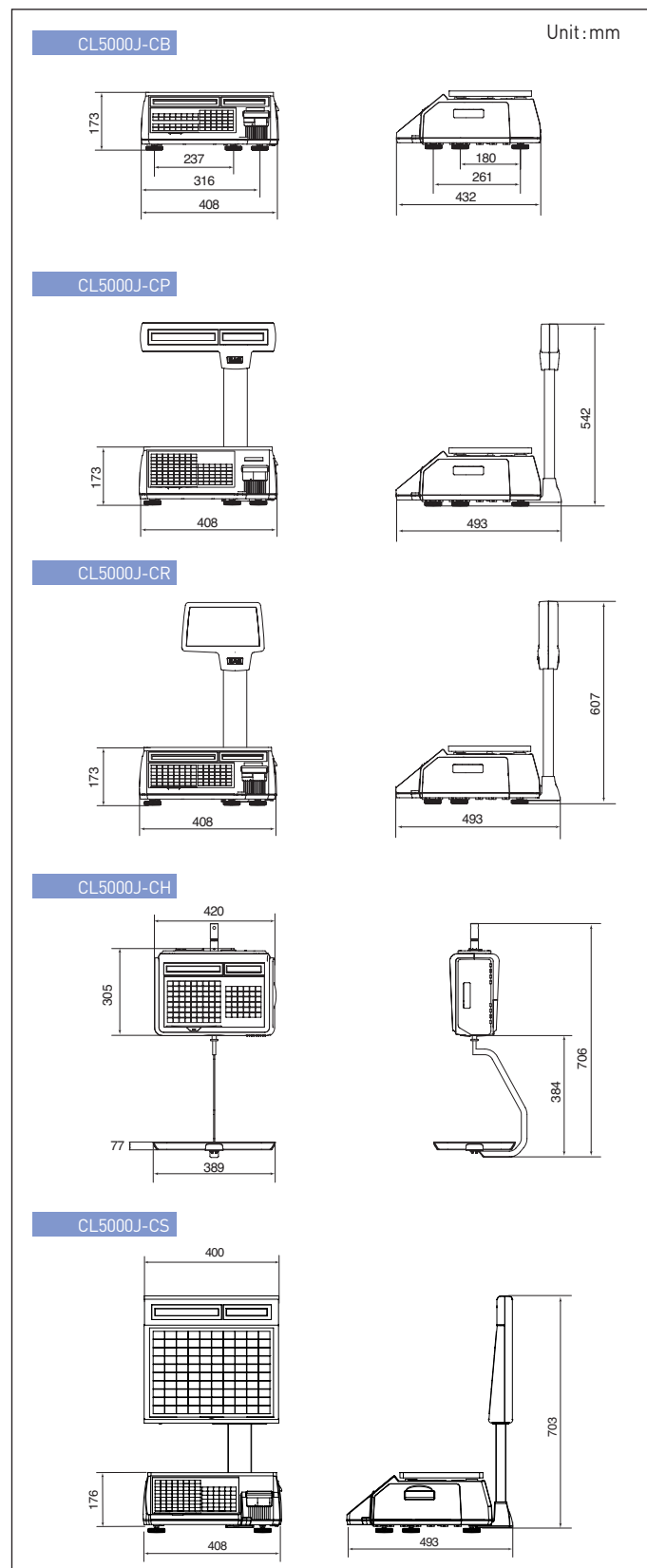
TEL\_ 82 2 2225 3500

FAX\_ 82 2 475 4668

<http://www.globalcas.com>

Specifications are subject to change for improvement without prior notice.

## DIMENSIONS



C-90019002

RETAIL WEIGHING SOLUTION™



Commodity name display



Cartridge loading type label installation



Direct PLU keys & function keys

# CL5000J SERIES

## Label Printing Scale

CL5000J series is the most effective business network solution with economic price.

- Flexible & Reliable network system (wired/wireless)
- Fast network downloading and user friendly PC software



# CAS



# CL5000J SERIES



## Features

### Display - LCD

The LCD display is used for displaying 4 digits of tare value, 5 digits of weight value, 6 digits of unit price and 6 digits of total price. And the dot matrix LCD display (60x8 dots) is used for displaying commodity name up to 12 characters.



### Menu System

Unique 4 digits 'Menu Code' entry pin point the desire program field.  
ex) Menu Code "1120" is for Editing PLU name.

### PLU specification & Memory

2MB memory can hold up to 6000 PLUs with commodity name or ingredient.

Ingredients

- 1,000 Direct Ingredients (300byte / pcs)
- 100 Indirect Ingredients (400byte / pcs)



### Printer mechanism

High speed print (75mm/sec)-cartridge loading type label installation with high quality ROHM printer head (50km/5x107 pluses) makes so much easier to replace a new roll of lable.



### Label & Barcode Types

CL5000J allows full graphic label design!  
It provides 40 free label format.  
Barcode type

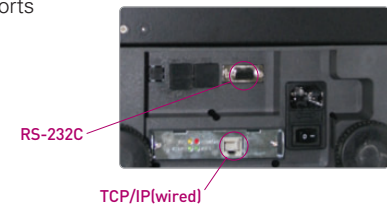
- EAN-13, 120F5, CODE128C



### Communication

CL5000J is built in TCP/IP (Wired) network card and RS-232C interface used to connect with PC or printer.

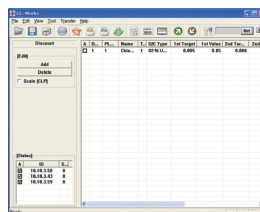
- IEEE802. 11G Ethernet supports data transmission speed of 50 PLU/sec



## PC software : CL-works

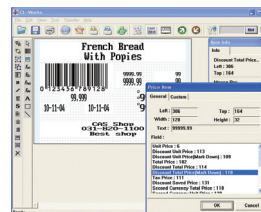
User-Friendly Scale management software

PLU programming, store data, sales report, label editor, key-pad editor and much more, control all the program data by CL - works program.



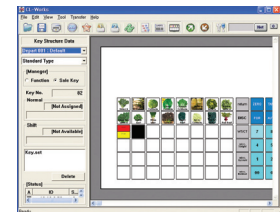
#### PLU Editor

Enable to easy PLU control  
Allows PLUs management by excel



#### Label Editor

20 modifiable label formats  
Easy downloading of label formats



#### Keypad Editor

Easy to setup and download  
Key design colour Image  
Keypad supported

# Label Printing Scale

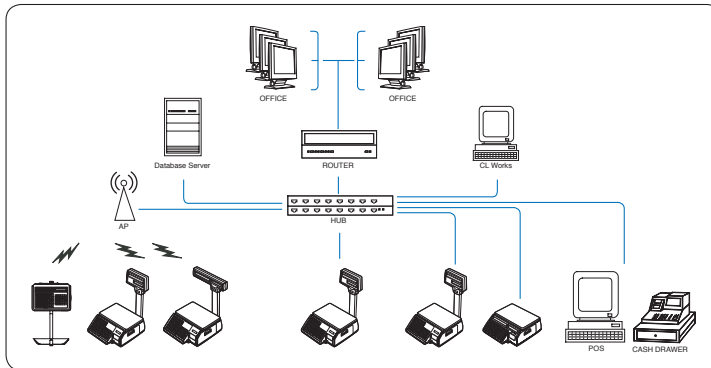


## Product Line-up

CL5000J Series are suitable for any circumstance market sizes with economic price

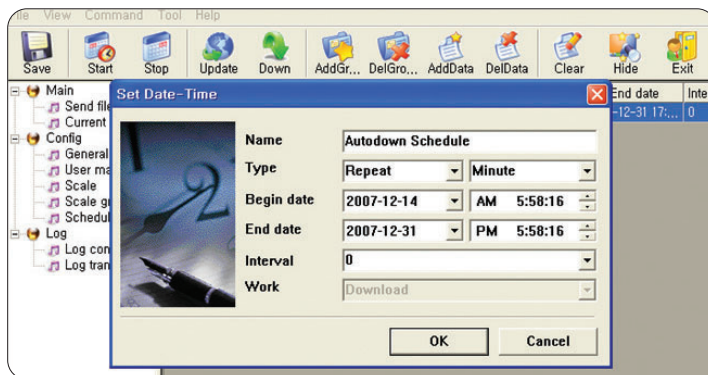


## Network System



Wired / Wireless Network

- ▶ TCP/IP communication protocol
- ▶ IEEE802.11G specification wireless network
- ▶ 64/128 bit WEP security system, WPA(TKIP), WPA-II
- ▶ Multi & wired/wireless network (local network, Internet service)
- ▶ Network structure for
  - Large, medium and small independent markets
  - Hyper market



Middleware system - Headquarter managing solution

- ▶ Data transmission time scheduling
- ▶ Remote database server accessing
- ▶ Multiple scale report management